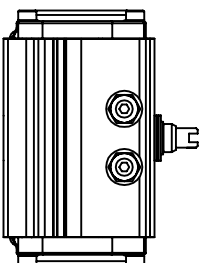
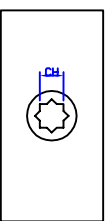
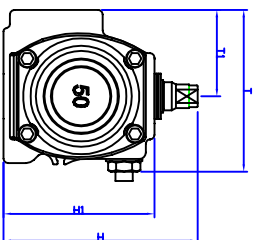
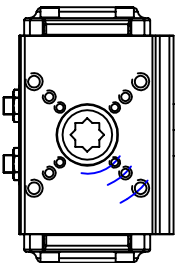
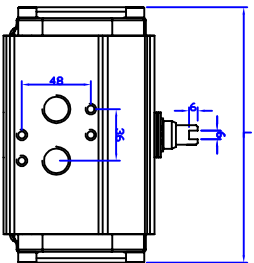
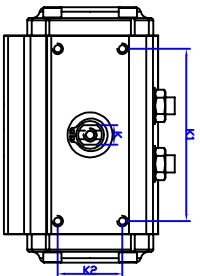
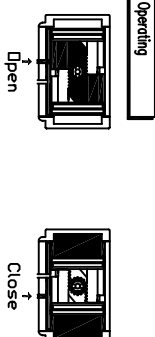


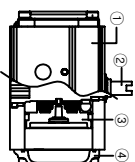
RACK&PINION / SINGLE ACTING / JD40~210



REVISION	REVISION DESCRIPTION	DRAWN / DATE	RECHECKED / DATE	APPROVED / DATE
△				



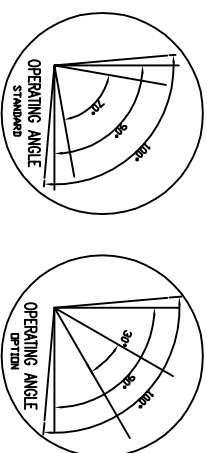
MAJOR PART LIST



NO.	PART NAME	MATERIAL
1	BOB	ALUMINUM
2	SHAFT	STEEL ALLOY (INCRUS COATING)
3	PISTON	ALUMINUM
4	COVER	ALUMINUM

SPECIFICATIONS

1. Operating fluid : Compressed dry air
2. Operating pressure : 4Bar~7Bar
3. Operating temperature : -20~80°



■ DIMENSION(mm)

MODEL	K1	K2	ISO	φP.C.D	N-G	K	L	T	T1	H	H1	CH	DP	WEIGHT
JD-40	80	30	F03/F05	36/50	4-M5/M6	9	97	63	32	75	55	9*9	9	0.6kg
JD-50	80	30	F03/F05/F07	35/50/70	4-M5/M6/M8	10	133	75	40	90	70	11*11	13	1.6kg
JD-65	80	30	F05/F07	50/70	4-M6/M8	13	154	89	46	107	87	14*14	14	2.7kg
JD-80	80	30	F07	70	4-M8	17	220	101	49.5	126	106	17*17	17	4.3kg
JD-90	80	30	F07/F10	70	4-M8	19	219	104	54.5	136	116	17*17	19	4.7kg
JD-100	80	30	F07/F10	70/102	4-M8/M10	22	256	129	61.5	148	128	22*22	19	7.5kg
JD-125	80	30	F07/F10	70/102	4-M8/M10	22	330	151	71.5	174	154	22*22	26	11.6kg
JD-140	80	30	F10/F12	102/125	4-M10/M12	24	389	164	77	192	172	27*27	26	18.9kg
JD-160	80	30	F10/F12/F14	102/125/140	4-M12/M16	32	416	188	89	216	196	36*36	30	26.3kg
JD-210	80	30	F16	165	4-M20	9	527	231	115	284	254	46*46	60	47.2kg

PRODUCT NAME Pneumatic actuator		DRAWING NO. JS40-210	
MODEL JD-40~JD210	TITLE DRAWING	APPROVED DATE	REV. 1
MATERIAL -	HARDNESS -	DATE	



제 이 에 스 벨 드